

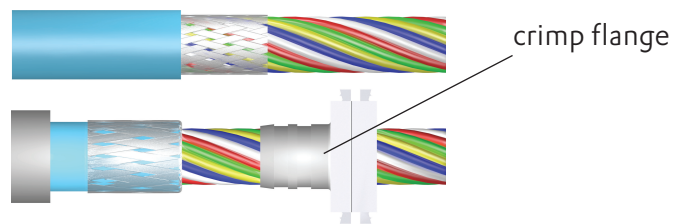


The assembly device helps to reduce the manual forces during assembly and allows an efficient and fatigueless crimp procedure.

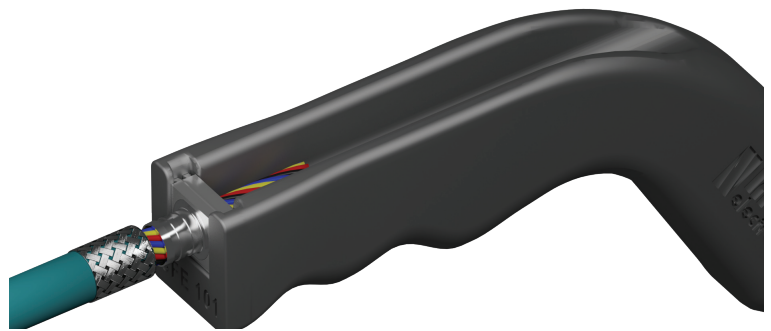
Before starting with the crimp flange assembly:

- Please make sure that you dispose of an up-to-date crimp data definition for your specific cable.
- The following assembly information refers to our standard crimp procedure KV0001 (see catalogue page 66), for other assembly procedures the use of our CFE assembly device may vary.
- Please make sure that you dispose of the appropriate CFE device.
  - CFE101 for crimp flanges CF100-x/x and CF300-x/x
  - CFE401 for crimp flanges CF400-x/x
  - CFE201 for crimp flanges CF200-x/x
  - CEExx for circular crimp units size 12-22

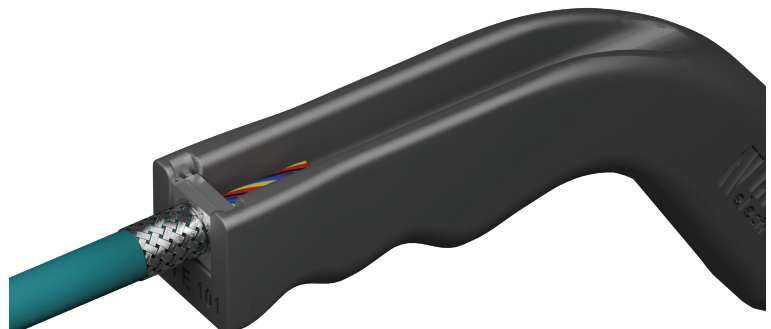
- Slide the crimp flange over the conductors.



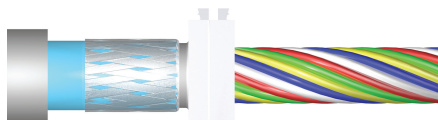
- Insert the crimp flange into the vertical groove of the CFE as shown on the picture.



- Push the crimp flange underneath the braid and jacket with cautious rotation. Make sure that the braid is not pushed under the cable sheath.



- Leave a gap of approx. 1 mm between flange and jacket.



- Cut off the overlapping braid. Push the flange completely underneath braid and jacket. Remove flange and cable from the CFE device.



- Slide the crimp ferrule forward and crimp it with the indicated crimp dies.

